

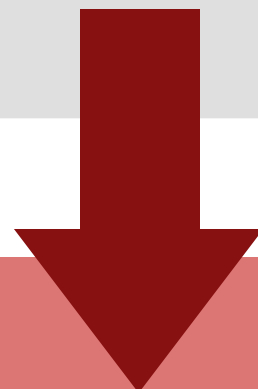
The Death of Public Transportation

Presented by Blind
2021



The Death of Public Transportation

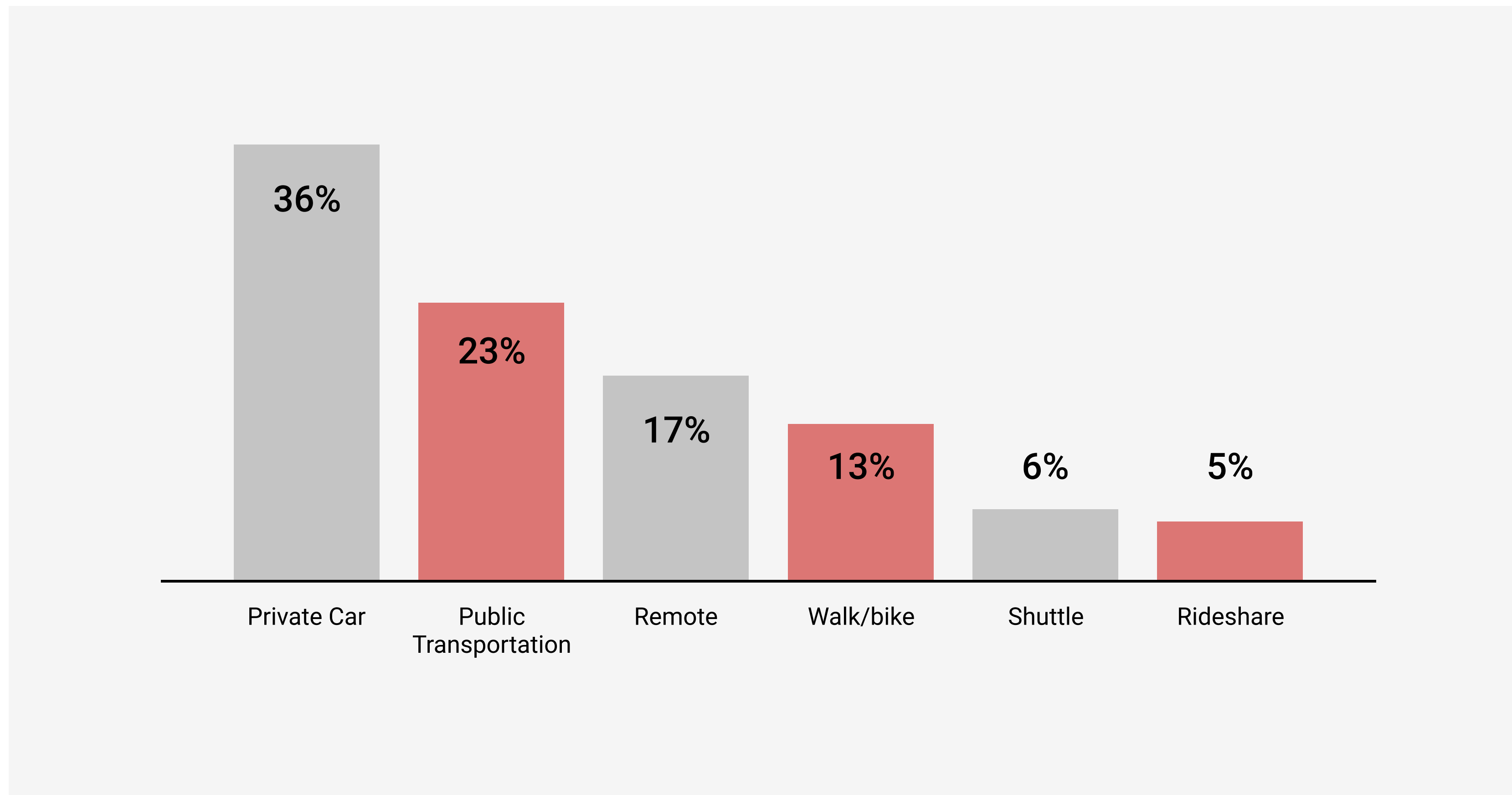
39% of professionals used public transportation to get to the office



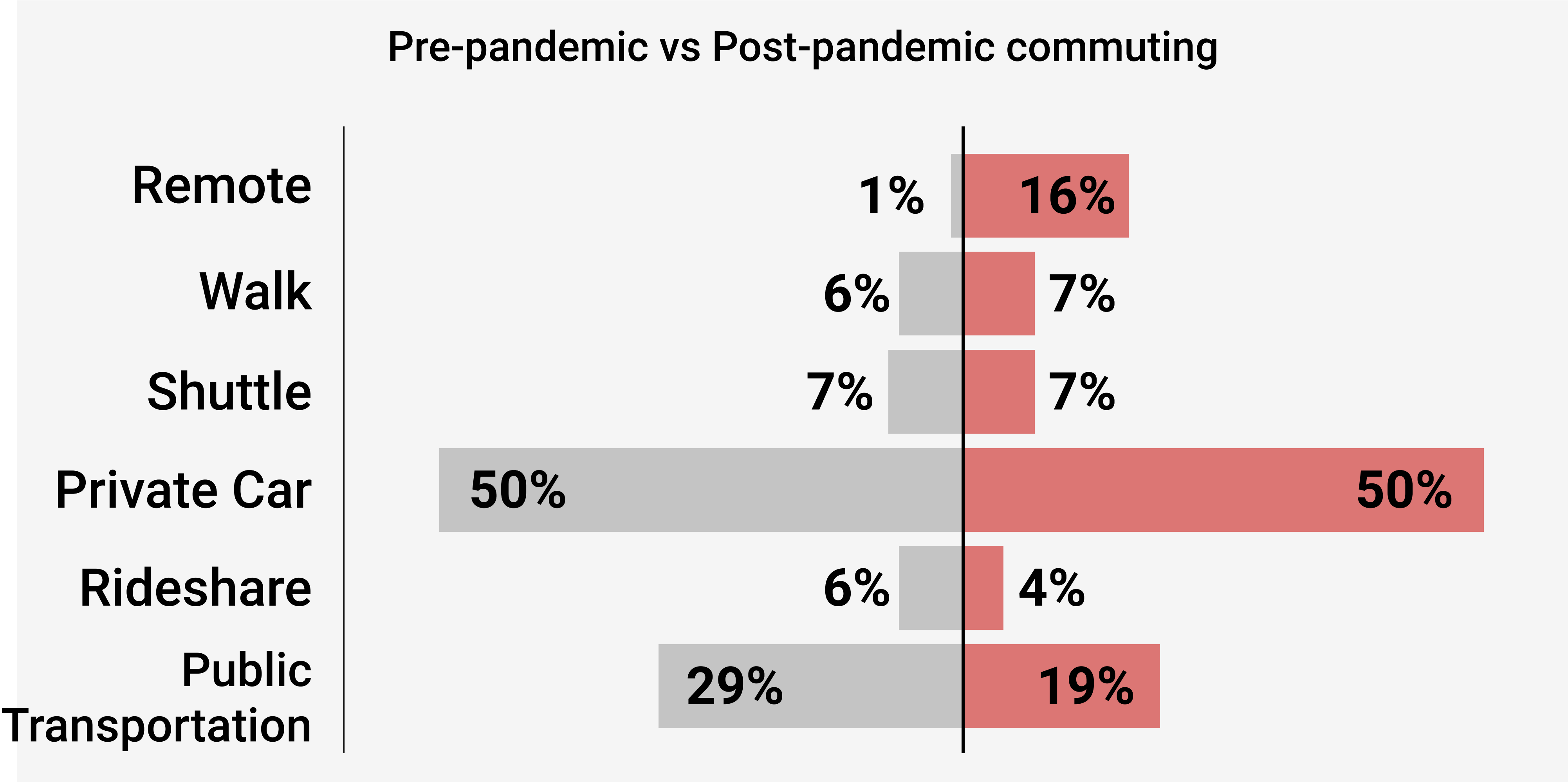
Now, only 22% of professionals plan on taking public transportation when the office reopens

That's a 17% decrease

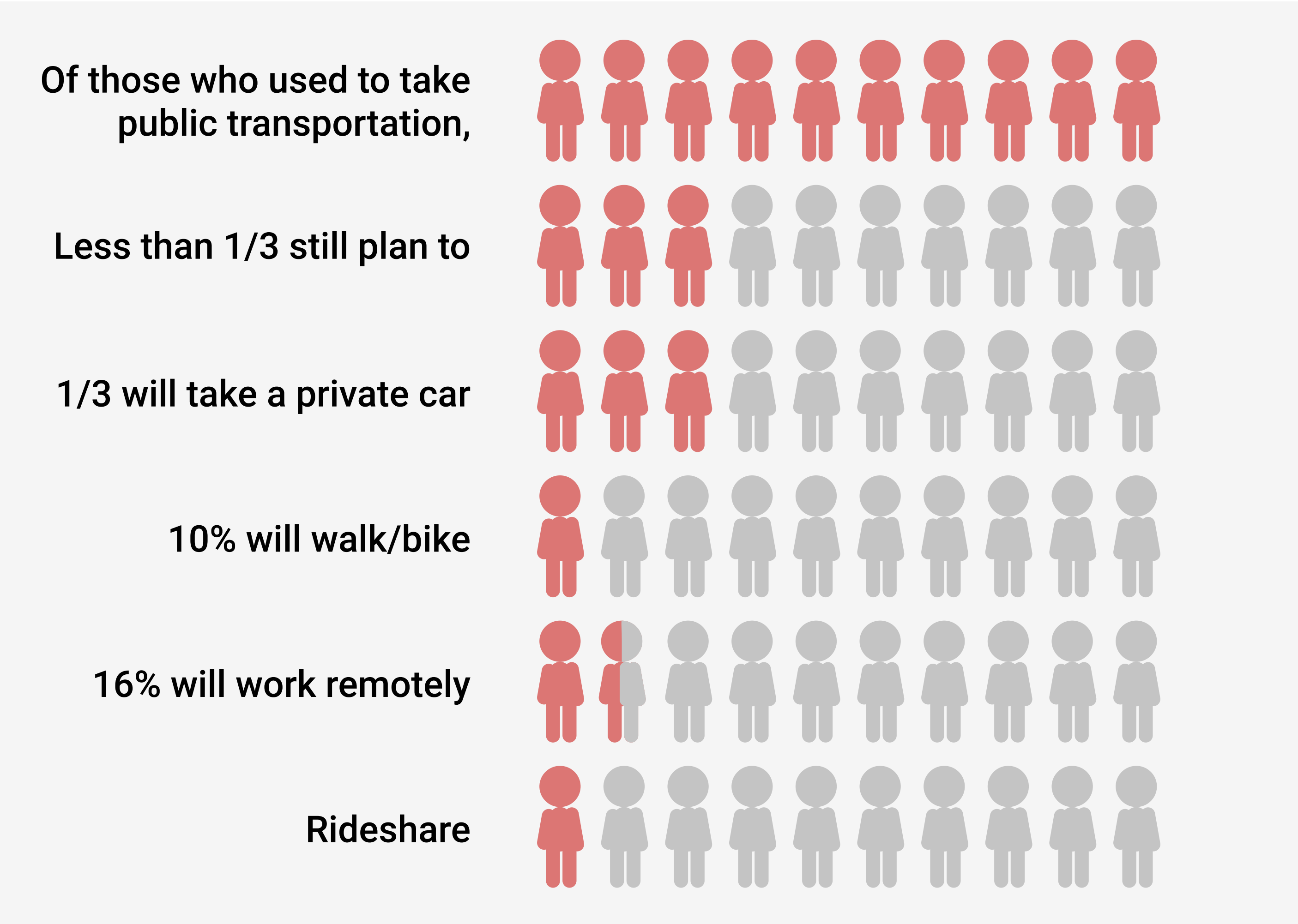
Of those who feel unsafe on public transit due to health concerns, this is how they plan to commute when the office reopens:



How professionals were commuting pre-covid vs how they plan on commuting back



Of those who used to take public transportation:



Of the **39%** of professionals who took public transportation pre-Covid, **69%** will be opting in for other forms of transportation

**But did
professionals
choose not to
commute because
they moved?**

No

**Of the 63% professionals who did
not change their place of residence
during the pandemic, 78% still are
choosing not to get back on public
transportation**

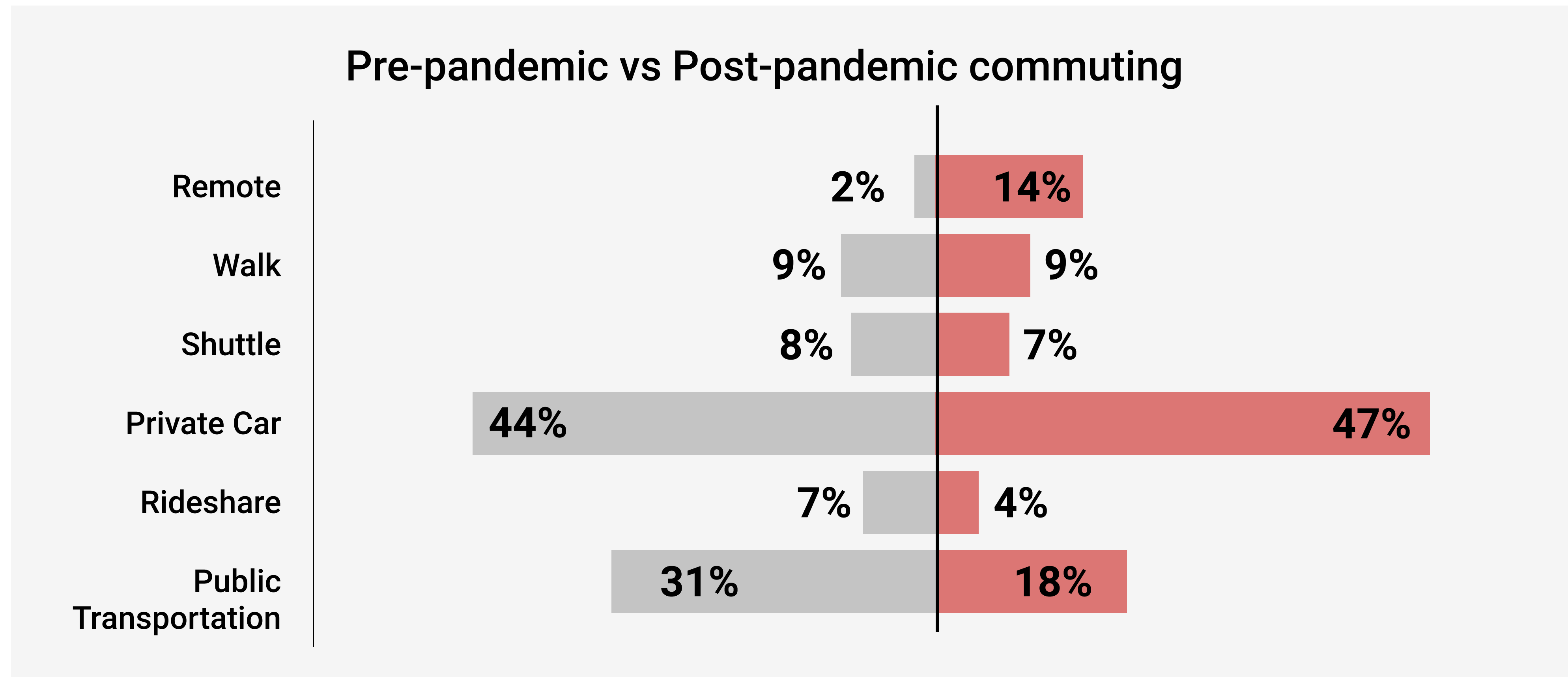
Why? Health Concerns.

55% of professionals do not feel safe commuting on public transit

SF Bay Area

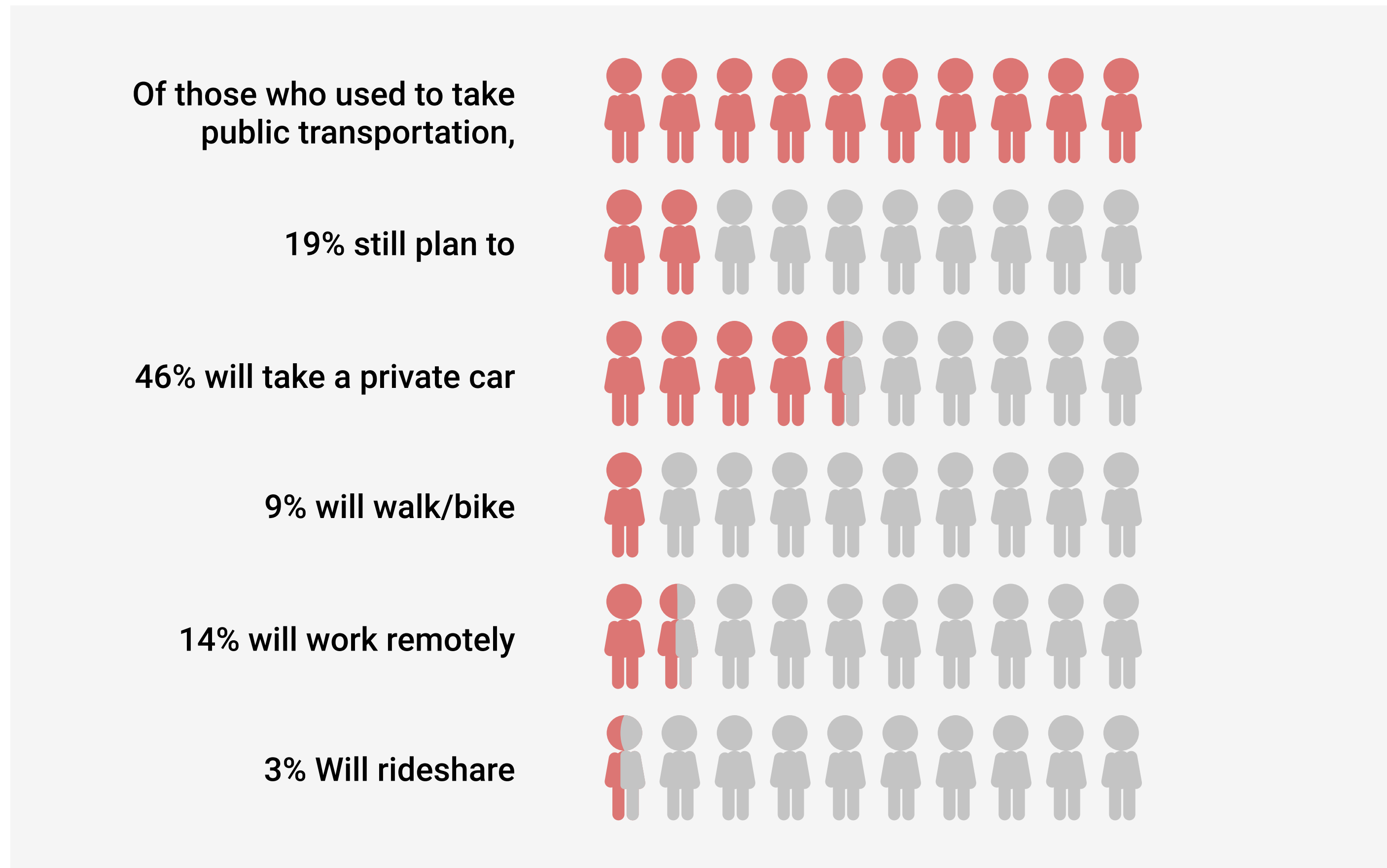
SF Bay Area Highlights

How did you commute to the office pre pandemic vs how do you plan on commuting to the office once it reopens?



SF Bay Area Highlights

Of those who used to take public transportation:

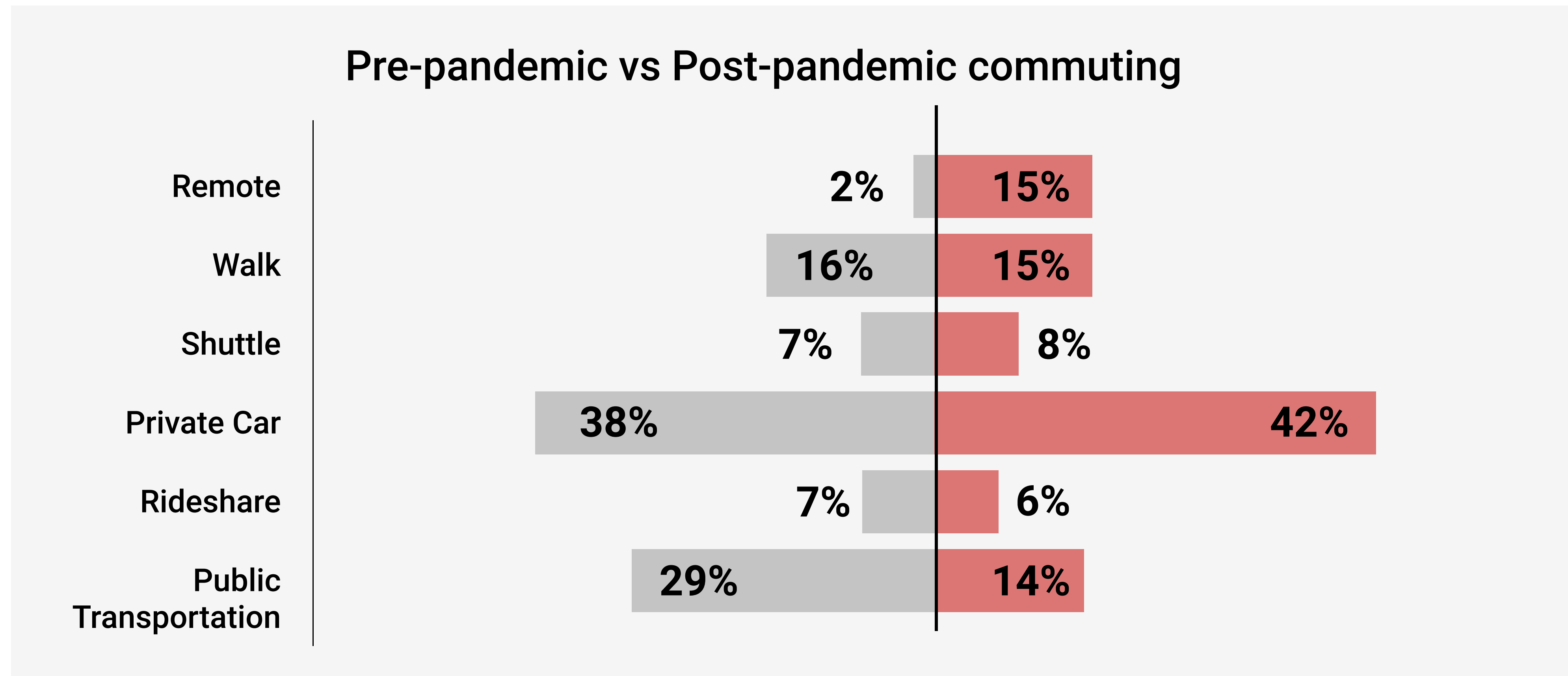


Of the **31%** of professionals who took public transportation pre-Covid, **81%** will be opting in for other forms of transportation

Seattle

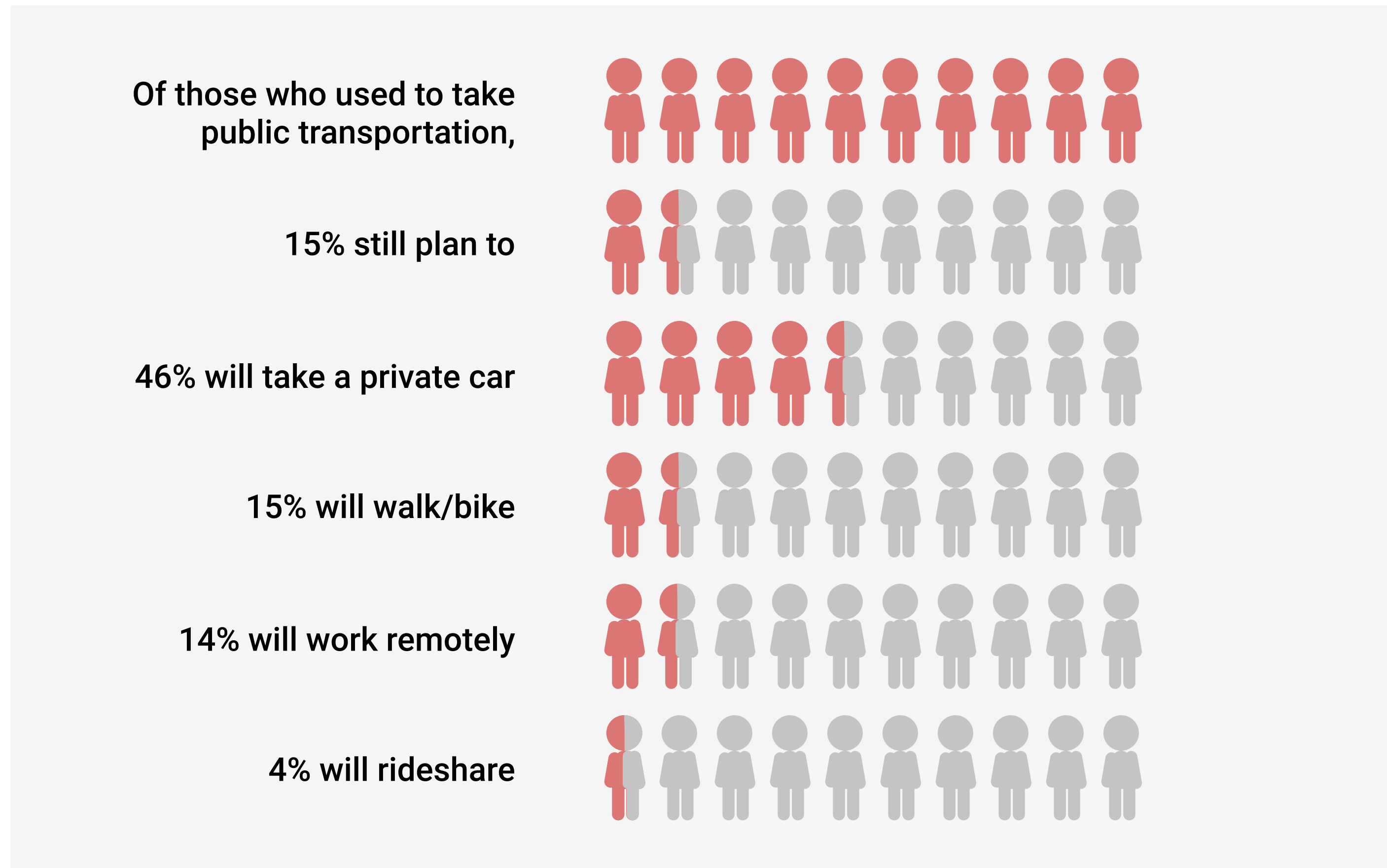
Seattle Highlights

How did you commute to the office pre pandemic vs how do you plan on commuting to the office once it reopens?



Seattle Highlights

Of those who used to take public transportation:

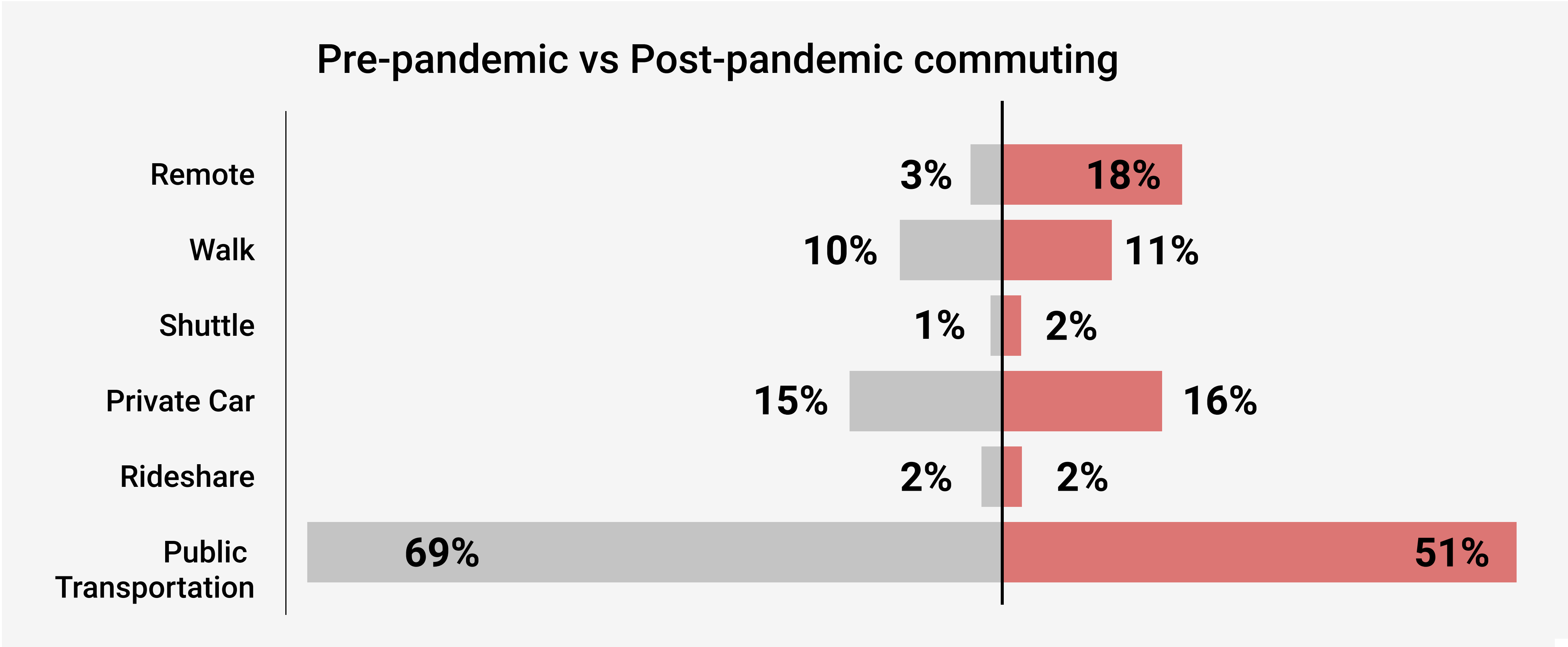


Of the **29%** of professionals who took public transportation pre-Covid, **85%** will be opting in for other forms of transportation

New York City

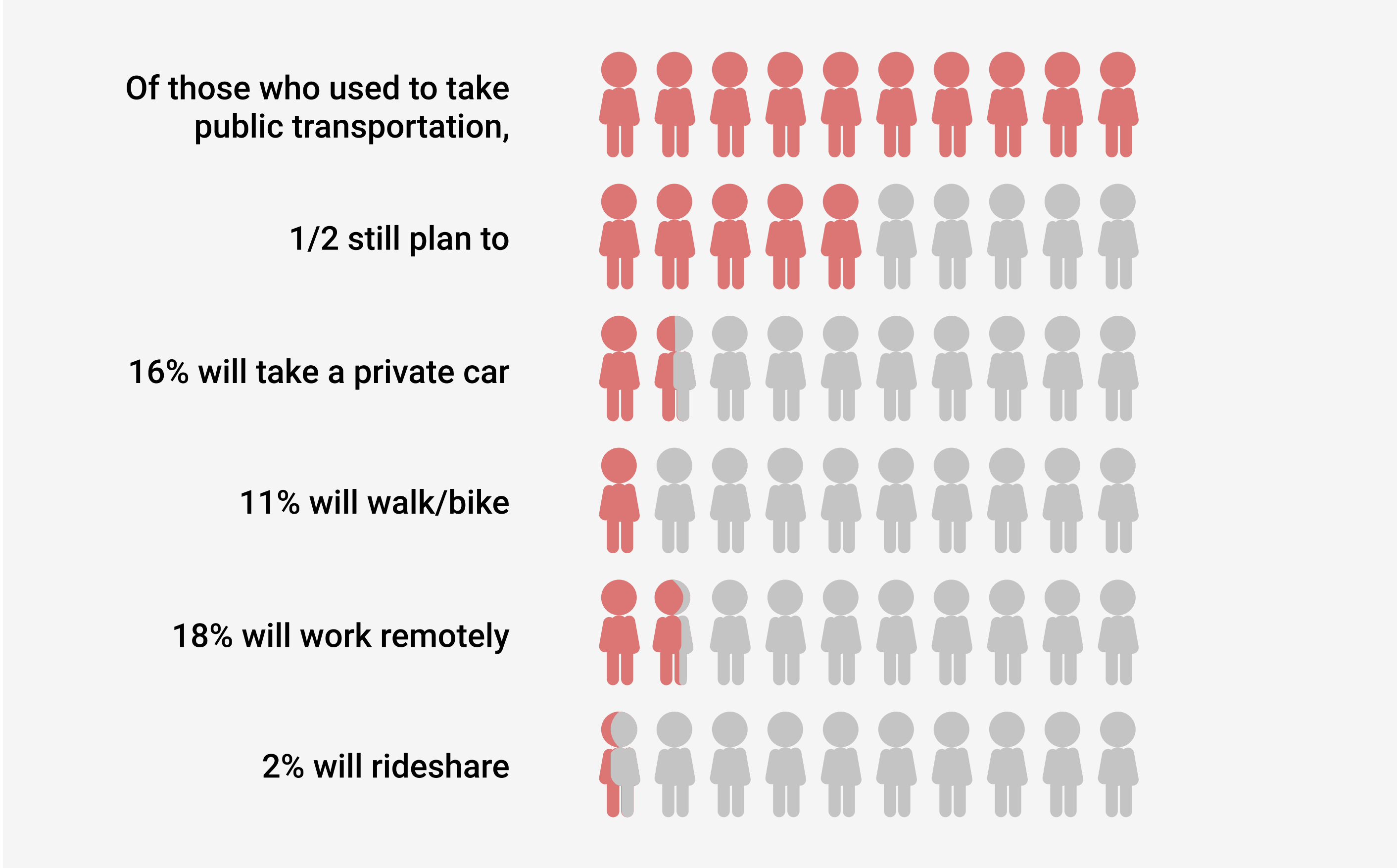
New York City Highlights

How did you commute to the office pre pandemic vs how do you plan on commuting to the office once it reopens?



New york City Highlights

Of those who used to take public transportation:



Of the **69%** of professionals who took public transportation pre-Covid, **49%** will be opting in for other forms of transportation

Summary

- NYC lost most of its public transportation users (18% decrease) in comparison to the Bay Area (13% decrease) and Seattle (15% decrease)
- Professionals in the Bay Area and Seattle are more concerned about their health on public transportation than professionals in NYC
- The professionals who are no longer taking public transportation overwhelmingly are now commuting by privately owned cars or staying remote
- Relocating during the pandemic plays little to no influence on the morning commute

About Blind

What is Blind?

Blind is a trusted community where 4.1MM+ verified professionals connect to discuss what matters most. Professionals anonymously communicate in private community channels and openly users across industries. The community shares advice, provides honest perspectives, discuss company culture, and discover relevant career information.

What is Blind's Mission?

Blind is a platform for change. Our mission towards transparency breaks down professional barriers, empowering informed decisions, and inspiring productive change in the workplace.

With an unprecedented year, users have been coming to Blind to continuously talk freely about the effects across the economy, their work, and other aspects of their lives.

For the past year, the community on Blind has been engaging with its users to share questions from their professional and personal lives. Through the freedom that only anonymity can provide, the honest conversations revealed on Blind are unlike any other social platform. As such, we surveyed our users as new issues unfolded over the past year. Some recent topics are how professionals are willing to earn less money to stay home, pet-friendly offices re-openings, and if they would quit if they had to go back into the office.

For more info, please feel free to email press@teambblind.com

The background features a light pink color scheme. On the left side, there are two vertical bars of equal height and width, separated by a small gap. To the right of these bars, there are two sets of concentric circles, also in light pink, with a small white dot at the center of each set. The circles are partially cut off by the right edge of the frame.

Thank you!